

Credit(s) earned on completion of this course will be reported to American Institute of Architects (AIA) Continuing Education Session (CES) for AIA members.

Certificates of Completion for both AIA members and non-AIA members are available upon request.

This course is registered with AIA CES for continuing professional education. As such, it does not include content that may be deemed or construed to be an approval or endorsement by the AIA of any material of construction or any method or manner of handling, using, distributing, or dealing in any material or product.

Questions to specific materials, methods or services will be addressed at the conclusion of this presentation.

Course Description

In today's environment, teams are stretched to capacity. Behaviors of 'over-stretching' are creating stress and division amongst teams and organizations. Participate in this self-reflective session that will allow individuals to reconnect with the fundamentals of collaboration, inclusion, and respect in the workplace.

Learning Objectives

Provide current and future leaders with some tools to reconnect and calibrate their connections with their teams by exercising the following principles:

1. Have Common Goals/Objectives
2. Open Communication
3. Seek to understand, then to be understood
4. Value differences...

A wide-angle photograph of a city skyline, likely Chicago, featuring a river in the foreground and a bridge crossing it. The background is filled with various skyscrapers and buildings under a clear sky. The text is overlaid on the center of the image.

Calibrating Collaborative Teams

Julius R. Williams
Prince William County Schools
APPA-U Faculty Member
Keynote Presenter



Calibrate...

To standardize (something, such as a measuring instrument) by determining the deviation from a standard so as to ascertain the proper correction factors.

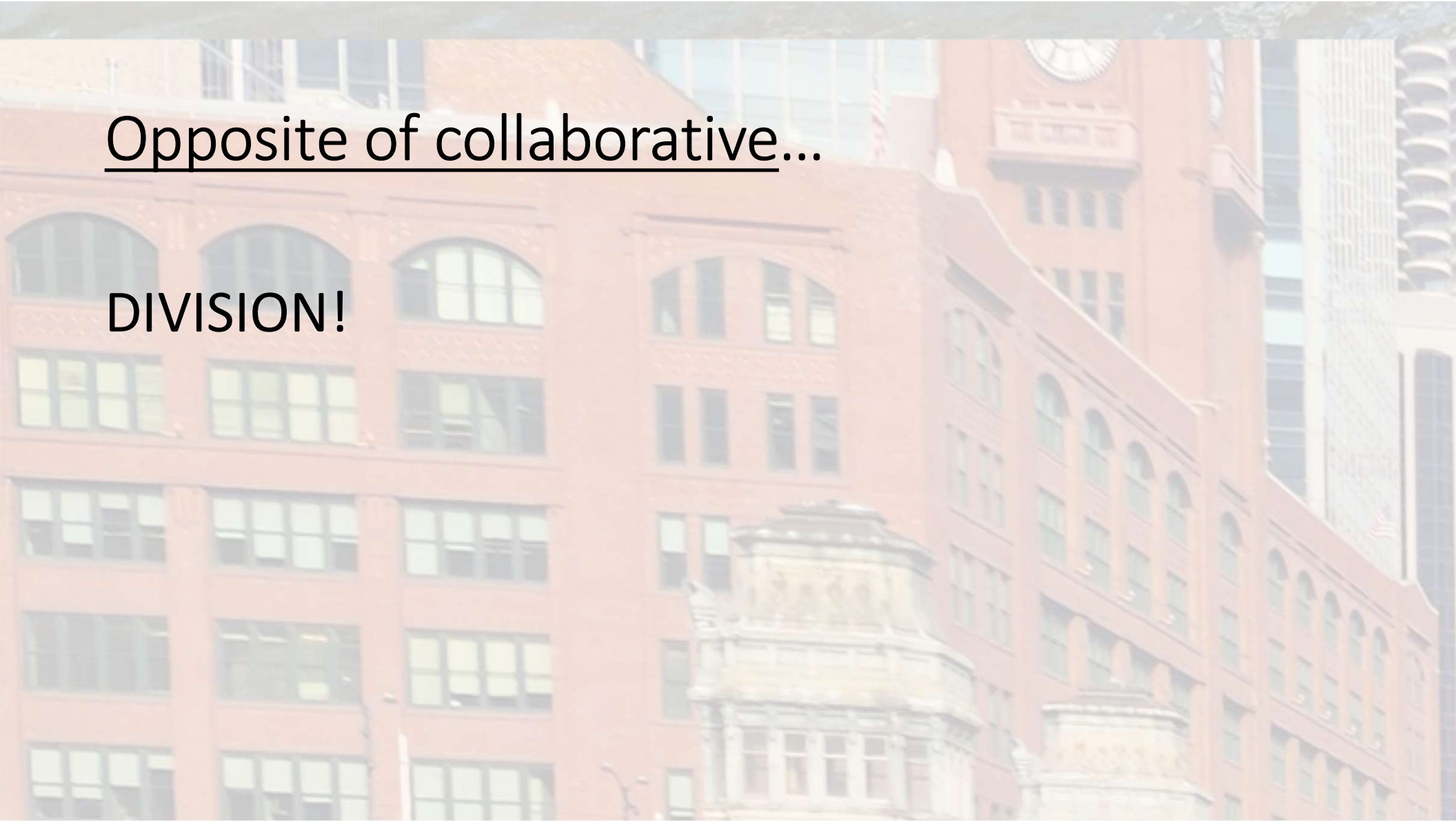


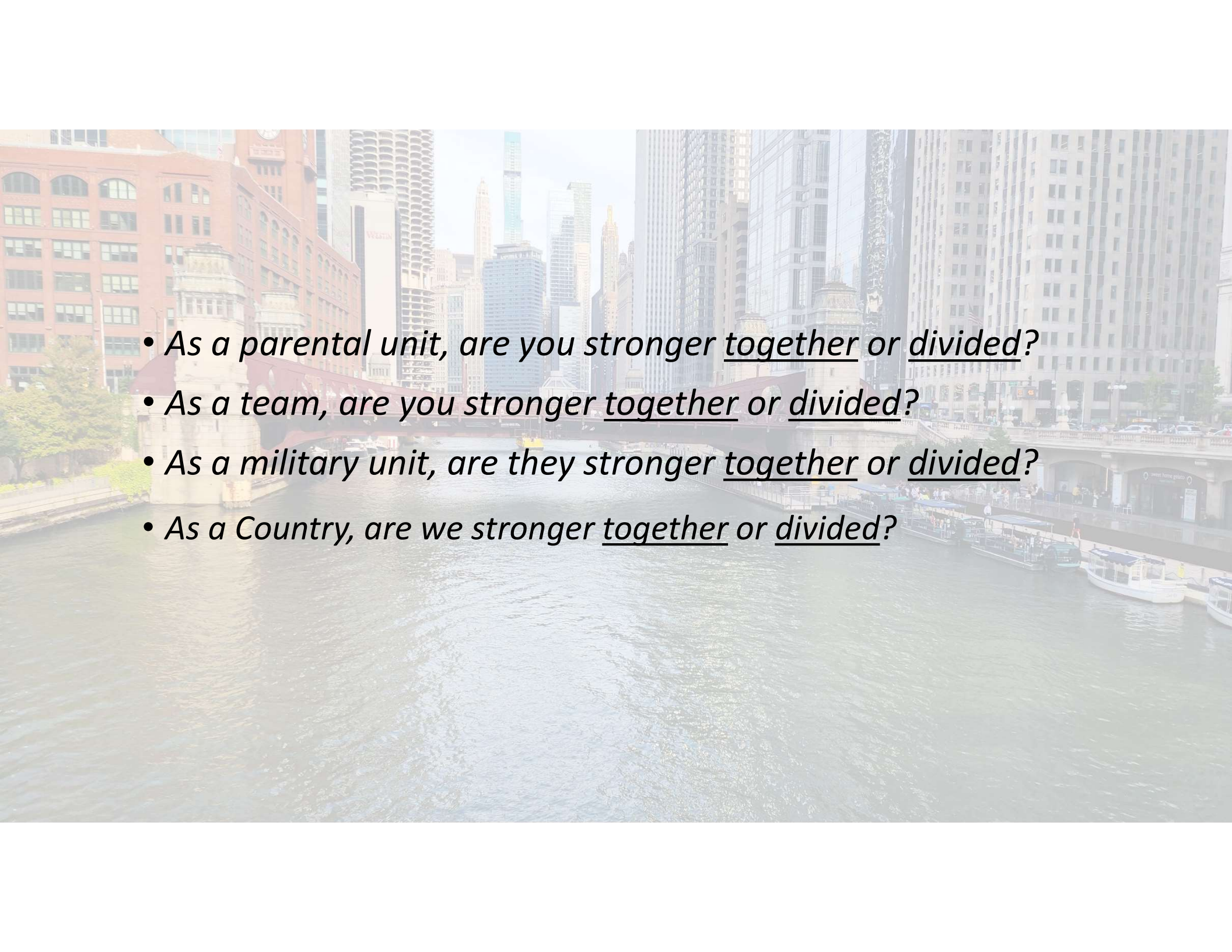
Collaborative...


To work jointly with others or together, especially in an intellectual endeavor.

Opposite of collaborative...

DIVISION!



- 
- *As a parental unit, are you stronger together or divided?*
 - *As a team, are you stronger together or divided?*
 - *As a military unit, are they stronger together or divided?*
 - *As a Country, are we stronger together or divided?*

A background image of a city street bridge over a river. The bridge is a reddish-brown color and has a sign that reads "LASALLE STREET". In the background, there are several tall buildings, including a prominent one with a dome. The water in the foreground is dark and rippled.

“America will never be destroyed from the outside. If we falter and lose our freedoms, it will be because we destroyed ourselves.”

— Abraham Lincoln



The best way to calibrate our teams is to consider these key points:

1. Reiterate Common Goals/Objectives
2. Open Communication
3. Seek to understand, then to be understood
4. Value differences...



Common Goals/Objectives

1. Mission, Vision, and Values
2. Strategic Plan
3. Benchmarks

Strategic Plan



PWCS VISION 2025
LAUNCHING THRIVING FUTURES

STRATEGIC PLAN

Adopted February 2, 2022



The background of the slide is a faded, light-colored photograph of a city street. It shows several tall, multi-story buildings with many windows. On the left side, there is a vertical sign with Chinese characters. In the lower-left corner, a portion of a building with a golden, ornate roof is visible. An American flag is also partially visible in the lower-left area. The overall image is semi-transparent, allowing the text to be clearly read over it.

Open Communication

- a. Honest Conversations
- b. Critical Feedback

The background is a faded, light-colored photograph of a city street. It shows several tall buildings with many windows. On the left, there is a vertical sign with some text, and an American flag is visible on a building in the lower part of the image. The overall tone is soft and slightly hazy.

Seek first to understand, then be understood

Talk less, Listen More



Value differences

- a. Mutual Respect – Respect ideas and opinions
(that are not your own)
- b. Diversity & Inclusion of Ideas

A photograph of a city river scene. In the foreground, the water is rippled. A yellow boat is visible on the left side of the river. A large, reddish-brown bridge spans across the river. On the bridge, a sign reads "LASALLE STREET". In the background, there are several tall buildings, including a prominent one with a dome. The overall scene is a typical urban waterfront view.

Culture, Beliefs, & Personal Integrity





QUESTIONS?

A faded background image of a city river scene. In the foreground, a wide river flows towards the viewer. A large, ornate bridge with a red-painted steel structure spans across the river in the middle ground. The bridge has decorative stone pillars on either side. In the background, a dense city skyline is visible, featuring numerous skyscrapers of varying heights and architectural styles. The sky is a pale, hazy blue. The overall image has a soft, semi-transparent appearance, allowing the text to be clearly visible over it.

THANK YOU!

Julius R. Williams

williaj3@pwcs.edu

(240) 438-7945